

LSI Journal

The Lutheran Science Institute

January-March, 2011

25th Anniversary Year



The Message of the Bombardier Beetle

-  **A Review of Geoffrey Berg's
*The Six Ways of Atheism***
-  **Noah's Ark Theme Park Planned**
-  **Obituaries for Weigand and Uher**

LUTHERAN SCIENCE INSTITUTE, INC.

4130 Harvest Lane
Racine, Wisconsin 53402-9562
<http://www.lutherscience.org>

The mission of the Lutheran Science Institute is to learn, share, and promote the glory of God as revealed in His holy Word and demonstrated in His created world, beginning with the pastors, teachers, and laity of the WELS (Wis. Ev. Lutheran Synod) and the ELS (Ev. Lutheran Synod).

OFFICERS: () denotes remaining years in office.

PRESIDENT: WARREN KRUG (2), M.S. Educ
E-mail: WPKrug5@yahoo.com

VICE PRES.: PATRICK WINKLER (1), P.E.,
M.S.Eng., M.Div.
E-mail: runx10@gmail.com

SECRETARY: MARK GROTH (2)
Email: mgroth@wi.rr

TREASURER: CRAIG SCHWARTZ (1), MSciEd
E-mail: jcs@ecentral.com

BOARD of DIRECTORS:

PASTOR DAVID PETERS S.T.M. (2), S.T.M.
E-mail: pastor@trinityug.org

JEFFREY STUEBER (2)
E-mail: jstueber@charter.net

RON ALTERGOTT (2)
E-mail: altron@att.net

DR. DAVID GORSUCH (1)
E-mail: CGorsuch@wi.rr.com

MARK BERGEMANN (1)
E-mail: MarkBergemann@yahoo.com

EXECUTIVE DIRECTOR: BRUCE HOLMAN, Ph.D.
E-mail: bholman3@sbcglobal.net

EDITOR: WARREN KRUG
E-mail: admin@lutherscience.org

THE LSI Journal is published quarterly by the Lutheran Science Institute. Views expressed herein are not necessarily those of the Institute. All **Bible references** are from the New International Version (NIV ©1973, 1978,1984) unless otherwise noted.

Send your suggestions, comments, and manuscripts to:

LSI JOURNAL
4130 HARVEST LANE
RACINE, WI 53402-9562

or e-mail: admin@lutherscience.org

The Annual Meeting of the Institute is held the Saturday *after* Thanksgiving. At least three other meetings are held during the year at locations

selected by the president. Meetings are open to the public and announced in the LSI JOURNAL and/or on our web site.

MEETING SCHEDULE*

- ◆ 4th Saturday in January, 1:00 p.m.
- ◆ 2nd Saturday in June, 1:00 p.m.
- ◆ Last Saturday in October, 1:00 p.m.
- ◆ Saturday *after* Thanksgiving in November, 1:00 p.m.

*Dates, times, and locations subject to change. Additional meetings may be scheduled. Check with the president, secretary, or editor or see our web site for verification.

4 The Message of the Bombardier Beetle

By Warren Krug

This creature has been given the ability to hit its enemies with a noxious spray so hot it reaches the boiling point of water.

8 Geoffrey Berg's *The Six Ways of Atheism*

A Book Review by Jeff Stueber

Throughout history there have always been people who wish to disprove the existencer of a deity, and Geoffrey Berg is a recent contributor to this quest.

12 Obituaries for Cleone H. Weigand and Otto Uher

15 Best of the Blog: Noah's Ark Theme Park Planned for Kentucky

18 News

20 Nuggets: Top Working Animals / Foods Which are Better Than Advertized / Jonathan Sarfati / Managing Your Weight—Four Tips / Eat the Invaders / 1 John 3:1 / How Reliable are Economic Studies / Why Does Daylight Savings Time Begin at 2 a.m.? / Telling Lies for Fun

24 Kids' Page: Storks

26 My View: *In the World But Not of the World*



The Message of the Bombardier Beetle

By Warren Krug

A little bug known as the bombardier beetle has become famous in the debate over evolution because of a remarkable talent. This creature has been given the ability to hit its enemies with a noxious spray so hot it reaches the boiling point of water. Creationists wonder how anyone could believe such an insect could ever have evolved, while evolutionists think they

have shown that it could indeed have evolved.

Warren Krug, a retired teacher, is the editor of the *LSI Journal* and is currently serving as president of the Lutheran Science Institute. He holds a B.S. in Education from Concordia University Chicago and a M.S. in Education from Oklahoma State University. He is a member at Trinity, Caledonia, Wisconsin.

Photos from Wikimedia Commons. Above photo is of the *Brachinus* species. Cover photo is of the *Chlaenius* species from India.

The Beetle and Its Habitat

These beetles can be found on every continent except Antarctic and Asia. They prefer woodlands or grasslands in temperature zones but can live in other environments if there are moist places to lay eggs. Most bombardier beetles are carnivorous, even the larva, and typically hunt at night for other insects.

The Beetle and Its Weapon

Bombardier beetles actually make up a group of more than 500 species of a ground beetle which has been divided into four tribes.¹ This beetle's most notable feature is its defense mechanism. When disturbed, it will eject its noxious spray machine-gun style with rapid bursts from special glands in its abdomen. The process, which is accompanied by a popping sound, is called pulse combustion.

How does it do it? It must first produce and store two chemical compounds, hydroquinone and hydrogen peroxide, in separate reservoirs located in the rear tip of its abdomen. When threatened, a bombardier beetle contracts muscles which force the two chemicals into a mixing chamber containing water and a mixture of catalytic enzymes.²

When combined, the chemicals undergo a violent chemical reaction which raises the temperature to the boiling point of water. As pressure builds, the entrance valves from the storage chambers close, thus protecting the beetle's internal organs. The extremely hot, foul-smelling liquid now partially becomes a gas and is expelled through an outlet valve into the atmosphere with an accompanying popping sound. The ejections can occur around 70 times at a rate of about 500 times a second.³

Divine Design of the Bombardier Beetle

Creation scientists believe this insect had to be designed by an Intelligent Creator as it is and could not have evolved slowly step by step. Just consider all the intricate parts of its defense mechanism. For the apparatus to be useful, everything has to be present — the chemicals, the chambers, the right enzymes, the muscles, the outlet valve, the

1. A "tribe" is a taxonomic rank between family and genus.

2. Catalytic enzymes are proteins which can produce chemical changes.

3. "Bombardier Beetle," *Wikipedia, the Free Encyclopedia* (December 15, 2010), http://en.wikipedia.org/wiki/Bombardier_beetle.

Accessed December 19, 2010.



Australian
Bombardier
Beetle
(*Pheropsophus
verticalis*)

intelligence to know how and when to use it, etc. For any part not to be present, the mechanism would not work at all, and one wonders why the beetle would continue to “evolve” the system if it were not accomplishing anything.

Even more important is the extreme danger to the beetle itself if it were to develop its defense mechanism without the proper safeguards. If the outlet valves were not in place to protect its internal organs from the boiling liquid, the beetle would severely injure itself. Also, if the walls of the output passage were not built firmly enough, the beetle could not withstand the heat and pressure from the reaction. In addition, the beetle somehow has been given a way of not injuring itself as it sprays the irritating liquid at its enemies.

The bombardier beetle’s defense mechanism is so cleverly

designed that the aircraft industry is taking notice. Combustion engineers are studying the beetle’s unique pulse combustion and nozzle ejection mechanism. They hope to obtain clues to help them develop a device that can relight aircraft engines at high altitude by squirting plasma into the engine’s combustion chamber more accurately.⁴

Evolution and the Bombardier Beetle

Some evolutionists have undertaken the task of explaining away this evidence of design. Mark Isaak, writing for the evolutionist *Talk Origins* website, proposes a method for a “possible” step by step evolution of the bombardier beetle’s defense mechanism from that of a primitive arthropod. For some of the steps he proposes, Isaak points to similar features in other creatures. For other steps he just assumes that the feature just naturally developed in the beetle on its own.

“The scenario above is hypothetical; the actual evolution of bombardier beetles probably did

4. Brad Harrub and Bert Thompson, “Bombardier Beetles and Airplane Engines,” *Apologetics Press* (2003), <http://www.apologeticspress.org/articles/2102>. Accessed December 20, 2010.

not happen exactly like that,” Isaak admits. He does think that some of the parts of the mechanism could have been used originally for other purposes but lists only one possible example. Isaak also confesses, “Many people will still have trouble imagining how complexity could arise gradually,” but he then proceeds to provide examples of naturally occurring “complexity” such as clouds, cave formations, and frost crystals. These examples, however, don’t even approach the complexity found in the bombardier beetle.⁵

The psalmist exclaims in Psalm 139:14: “I praise you because I am fearfully and wonderfully made; your works are wonderful, I know that full well.” Much the same could be said about many of the Creator’s other amazing creatures such as the bombardier beetle. Perhaps the most amazing design of all though is the plan of salvation which God designed for all mankind. His plan to send his only Son down to earth to take our place and die for our sins so that we believers could live forever in heaven is a plan no human being could have designed. ❧❧

⁵ Mark Isaak, “Bombardier Beetles and the Argument of Design,” *The TalkOrigins Archive* (May 30, 2003), <http://www.talkorigins.org/faqs/bombardier.html>. Accessed December 20, 2010.

Beetle Facts

- ◆ There are about 450,000 described beetle species (order Coleoptera) with new species being regularly discovered.
- ◆ About 40% of all known insect species are beetles.
- ◆ Beetles are found almost everywhere except in the sea or the polar regions.
- ◆ Beetles differ from other insects in that they have a particularly hard exoskeleton and hard forewings.
- ◆ Beetles smell with their antennae.
- ◆ Beetles undergo a complete metamorphosis from egg to larva to pupa to adult.
- ◆ The Hercules beetle of Central and South America grows up to 6¾ inches and may be the earth’s largest insect.

Sources: “Beetle,” *Wikipedia*

“Five Largest Beetle Species in The World,”
www.bukisa.com

Geoffrey Berg's *The Six Ways of Atheism*

A Book Review by Jeff Stueber



Throughout history there have always been people who wish to disprove the existence of a deity, and Geoffrey Berg is a recent contributor to this quest. Berg, a graduate of England's Cambridge University, claims to have "absolutely" disproved "the existence of God, logically and simply." His book, *The Six Ways of Atheism: New Logical Disproofs of the Existence of God* (so named to contrast with "The Five Ways" of St. Thomas Aquinas, who attempted to prove the existence of God using five different arguments — five ways), was published in 2009.¹ In it Berg presents six "new or improved" arguments to disprove the existence of God by simple logical means "that practically everybody can understand."

One might expect that something so grandiose as an attempt to disprove God's existence would require more than a mere 175 page self-published paperback — especially since Christ's resurrection and the creation of the universe lurk in the back-



ground to upset the atheist's apple cart. It is important to note that Berg's arguments are all merely philosophical; neither scientific nor historical arguments are featured. So, after being promised an intellectual buffet at the beginning of this book, we are left still hungry with barely anything to eat.

The author calls his first offering the "aggregate of qualities argument," using statistics to un-

1. Publisher unknown. Summaries of Berg's six logical arguments against the existence of God are published on a website dedicated to the book and its contents at <http://www.thesixwaysofatheism.com> (accessed September 30, 2010). All citations from this book will have page numbers noted in the text.

Jeff Stueber is a member of the LSI Board of Directors member and a free-lance writer living in Watertown, Wisconsin. He is a member of St. John's, Watertown.

dermine the very possibility of God's existence — not only the Christian God, but the existence of any god at all. Berg writes:

So there are so many possible versions of religion that by the sheer laws of chance nobody can have any sensible hope of believing in the correct type of religion and the correct version of God even if God were to exist. Such is — and should be — the power of numbers and arithmetic to produce a valid argument. The sheer logic of statistics properly applied can indeed amount to an overwhelming and valid argument that throws light upon what may otherwise be a very confused situation. In essence the aggregate of qualities argument works to throw light on the likelihood or otherwise of God existing by using an arithmetical, statistical analysis of the topic. [pp. 27-28]

Atheists, of course, do not take such an argument seriously because they believe that life originated spontaneously — despite the overwhelming odds against it happening all by itself. I, a creationist, am a person of numerous characteristics whose existence is very unlikely. Yet here I am! This must mean that the existence of very unlikely things is possible.

However, Berg begins his argument in the wrong place. The traditional Christian position is that God is not an aggregate of

6 Ways

parts which are assembled in such a way that we can calculate the probability of his existence. And if one begins in the wrong place, one is bound to end up in the wrong place as well.

Next Berg claims that we cannot, in principle, even understand or comprehend God. His analogy to explain this argument is the jigsaw puzzle of the whole earth. If we did not have a complete picture of the earth, we would not be able to assemble the picture. Given our mortality, we would not be able to recognize immortality because we could never be sure that any given being was actually immortal. Berg summarizes: “The comprehension, mortality, and power gulf between us and a potential God is so great that we humans lack, inevitably lack, the means to identify God even if God exists” [p. 52].

If we apply this same argument to evolution, we run into precisely the same difficulty. Evolution can just as easily be portrayed as a jigsaw puzzle which cannot be comprehended because nobody can exist throughout the entire life of

6 Ways

earth's history to see the earth's evolution. We can, following Berg's own example, only comprehend a small piece of the cosmic evolutionary puzzle. So if one cannot comprehend God by viewing only a small piece of the puzzle, then, by the same logic, neither can one comprehend or believe in evolution. Scientific disciplines, let alone theological disciplines, never depend on anyone's ability to comprehend every facet of anything, for to do so would mire us in constant agnosticism.

The argument from evil also rears its ugly head. In this his fourth argument Berg says:

God, being by definition supremely good and omnipotent and our creator, would if he existed have created the best possible world. Yet we can be sure ... that the world taken as a whole throughout the ages is not the best possible world. Therefore it is logically shown that God cannot actually exist. Therefore as God cannot exist within the parameters of Logic, God cannot and does not exist at all. [pp. 82-83]

So this man who claims that

we cannot in principle understand nor comprehend God now claims that he knows for sure that God would not create the best world. This is a horrible internal contradiction.

His last two chapters are his most developed, where his concern is a "potential" god who has the characteristic of omniscience. Berg's logic is this: Such a god could not conceivably know that he (or she, or it) is immortal because he is the only being that is god (by definition). Since our only knowledge comes from association with others, the only experience that a god could have about immortality would come from other immortal beings, and god would by definition be the only god like that; therefore such a god would not be omniscient. Therefore, no omniscient god can really exist because no god could really be omniscient.

Suppose that a god who has for many years been leading us to believe that he is immortal has in fact been lying to us about his being immortal. Does this somehow prove that god does not exist? It only means that either we, or perhaps even he, have been deceived. It does nothing to rule out god's existence. Neither is it logical to suppose that we can only have knowledge about ourselves from studying others. Were that true, then we never

could have any knowledge about anything. In that case, all people are lacking internal knowledge about themselves and none of them can be trusted.

Omnipotence, says Berg, means that an almighty god is able to do anything and everything; yet to attribute omnipotence to a god would be as absurd as the god creating an object which he himself cannot lift, or creating a square circle.

Our Christian position is that God can do whatever he wills, but that he will only do that which is consistent with his character. Whether or not God can create square circles may be a matter for theologians with too much time on their hands to debate, but in no way provides a logical argument against the very existence of God.

To conclude, most of Berg's arguments are philosophical, internally contradictory, and without either logical or theological merit. This shows that not all intellectuals with fancy academic pedigrees are truly the most intellectual!

Other reviewers who like Berg's book have nothing really intellectual to say about it in their online reviews. For instance, consider this pre-scholarly review:

The reason atheists write books and discuss the existence of gods is because the idea of supernatural beings is nonsense and faith heads

6 Ways

go around trying to conform the world to their personal idea of what they think their god wants and claim that not believing in their lies will cause torment. If religion relegated itself to private discussions, then we'd have nothing to discuss. We don't want anyone to come around and claim that an invisible, never before seen, or proved, being doesn't agree with our life choices and therefore we are evil and will be forced to live according to these claimed rules.²

So — the only reason that people invent religious tenets is to force others to conform to their wishes? That hardly suffices to explain the vast variety of religious beliefs held by people around the world throughout the ages! This is another example of atheists who write their critiques of religion without really understanding the religious. They would be better off seeking to understand rather than throwing rubber bullets. ☹️

² The comment posted June 17, 2009 9:02 A.M. by a man from Miami, Florida, who calls himself "Rice clown" at <http://www.opposingviews.com/comments/sad--5> (accessed September 30, 2010).

Obituaries for Cleone H. Weigand and Otto Uher

Cleone H, Weigand , 1933-2010

Pastor Cleone H. Weigand, 77, passed into eternal life on Thursday, September 16th, 2010 at the Kathy Hospice, West Bend.

A farmhouse in Town Theresa, Dodge County, WI was Pastor Weigand's birthplace. He was one of six brothers born to Wilbert and Elmira (nee Schaumberg) Weigand. After attending Mullen School, a one room country school, he spent eight years in Watertown, WI at Northwestern Preparatory School and College. In 1960, after four years of seminary training, which included a year of vicarage in Arlington, MN, he graduated from Wisconsin Lutheran Seminary in Mequon, WI. His first congregation was Immanuel Ev. Lutheran Church in Mosinee, WI where he served until 1966. From 1966 to 1977 he served St. Michael's Ev. Lutheran Church in Fountain City, WI along with Zion. Cream, WI from 1971-77. Pastor Weigand's call to Fountain City also included the oversight of St. Michael's Ev. Lutheran Home for the Aged, an intermediate care nursing home that was then operated by an association from within the congregation. On December 4, 1977 Pastor Weigand began his service at Redemption Lutheran Church in Milwaukee, WI. He served there until his retirement in 1998. After moving to West Bend, Pastor Weigand served Good Shepherd Ev. Lutheran Congregation as a part time pastor until March 1, 2003. During his ministry, he served the Western WI District as a member of the Commission on Evangelism and chairman of the District Special Ministries Board. Pastor Weigand maintained a lifelong interest in science and creation science literature. He was selected to

author the book *Creation* for the *People's Bible Teaching* series published by Northwestern Publishing House in 2000.

On July 29, 1962, Pastor Weigand married Judith N. Sievert, of Fort Atkinson, WI at St. Paul's Ev. Lutheran Church in Fort Atkinson. Their marriage was blessed with four children--Bethel, Martin, Lois, and Michael. Pastor Weigand is survived by his wife, Judith; his four children, Bethel (Pastor Bruce) Janisch, Pastor Martin (Deborah) Weigand, Lois (Mike Gleason) Mathis-Gleason, and Pastor Michael (Cindy) Weigand; 11 grandchildren, Sarah Janisch, Philip Janisch, Mary Janisch, Ashley Gleason, Chelsea Gleason, Ben Gleason, Joel Mathis, Kathy Weigand, Emily Weigand, Lucas Weigand, and Jenna Weigand; two brothers, Harvey (Karen) Weigand and Dennis (Ardis) Weigand; four sisters-in-law, Janet (James) Fenske, Karen (Tom) Miller, Lillian Weigand, and Vernice Weigand; two brothers-in-law, Dan (Pam) Sievert and James (Marilyn) Sievert; his mother-in-law, Lorna Sievert; other relatives and friends. He was preceded in death by his parents and three brothers, Philip (Deana) Weigand, and John Weigand.

Pastor Weigand served on the Lutheran Science Institute Board of Directors and wrote several devotions for the *LSI Journal*. Several of his meditations can be found online at <http://www.lutheranscience.org/2010-WeigandObituary.html>

Otto Uher, 1922-2010

Uborn in Racine, Wisconsin on January 14, 1922 Otto Frank Uher spent much of his life in the Caledonia area. His parents' farm still stands, as well as his one-room elementary school. He graduated from Racine Horlick High School in 1940. Following an 18-month



enlistment in the Navy Seabees (1942-1944), Otto attended the University of Wisconsin at Madison. While there he was a member of the collegiate rowing team. He later graduated from Milwaukee School of Engineering and secured employment at the Franksville Lumber Company. It was here that he met Alda Frank, his future wife.

Otto and Alda were married February 7, 1953, at Trinity Lutheran Church of Caledonia and resided in Milwaukee for a time. It was at this time that Otto became an adult confirmand at Trinity. God blessed their marriage with six children, and the Uhers moved to Caledonia.

A dedicated husband and father, Otto was employed in the leather tanning industry until his retirement in 1987. He also was an active member of Trinity Lutheran Church, serving as usher, stewardship committee member, and congregational president. A willing volunteer, Otto enjoyed being a poll worker, a helper at Shoreland's Wise Penny Resale Shop, and treasurer of the Lutheran Science Institute.

Though Otto's health debilitated later in life, his cheerful personality remained and expressed itself through his whistling. He enjoyed spending time with his children and their families and was thankful for the blessings of grandchildren and great-grandchildren. He survived his wife of 55 years, who entered glory in 2008.

God called Otto home to Jesus' arms on November 5, 2010, at the age of 88. LSI



Dec. 8, 2010 post

Noah's Ark Theme Park Planned for Kentucky

The \$125 million park will feature a full-scale replica of the ark.



Summary: A full-scale replica of Noah's Ark will be the featured attraction at a creationist amusement park to open in 2014 in northern Kentucky, Kentucky Gov. Steve Beshear has announced. The \$150 million project will be built by a for-profit group called Ark Encounter LLC, which is partnering with Answers in Genesis, the owner of the nearby Creation Museum. Ark Encounter plans to raise about \$125 million while Answers in Genesis will chip in with \$24.5 million for the Ark replica.

The park will also include a walled city, live animal shows, a children's interactive play area, a replica of the Tower of Babel, a 500-seat special effects theater, an aviary, a journey through biblical history, and a first-century Middle Eastern village. Builders plan to use environmentally-friendly building techniques.

“Bringing new jobs to Kentucky is my top priority, and with the estimated 900 jobs this project will create, I am happy about the economic impact this project will have on the Northern Kentucky

region,” Beshear said. A feasibility study indicated the park should draw 1.6 million visitors a year to the area.

However, secularists are beginning to raise objections, especially because the developers are seeking to recover up to 25% of the project's costs by recouping sales tax revenue paid to the state on tickets, lodging and other goods. Attorney Ed Kagin of American Atheists called state support for the project questionable even if it might not be illegal. On the other hand, some local leaders appear to be enthusiastically supporting the proposed park.

Ark Encounter did not announce prices for tickets to the attraction, but its website says ticket prices will be comparable to those of other regional attractions. A 2011 full-price ticket to Kings Island in Mason, Ohio is \$51.99 although discounts are available. Answers in Genesis will be responsible for day-to-day operations of the park. Its Creation Museum which opened in 2007 is located in Petersburg, Kentucky about 40 miles from an 800-acre site in Grant County where the Noah's Ark park may be built.

To read the entire article visit http://www.msnbc.msn.com/id/40460324/ns/us_news-life/

Comment: To the best of my knowledge, the proposed Noah's Ark will be the third full-scale replica of the ark to be built or under construction. The two others I know about are located in Hong Kong and the Netherlands. These full-sized arks should once and for all help bury the often-heard argument that Noah's Ark wasn't large enough to hold representatives of all the animals on earth. Skeptics generally underestimate the size of the ark while overestimating how many animals Noah would have had to take onto the vessel. People who view these ark replicas can appreciate how big Noah's Ark really was.

Noah's Ark with its three decks was huge—450 feet (135 meters) long, 75 feet (23 meters) wide, and 45 feet (13 meters) high. Compare the length to that of an American football field which is only 300 feet long (not counting the end zones). The volume of the ark, according to one calculation, would have been equal to 569 railroad stock cars.¹

The number of animals which boarded the ark would have been far less

1. <http://www.christiananswers.net/q-eden/edn-c013.html>

than many people imagine. First of all, only birds and land animals would have been represented. Secondly, the Bible says two of every “kind” of these animals (Genesis 6:20) would have been taken onto the ark. Many people believe “kind” means “species,” but the Bible doesn't define what is meant by the word “kind.” Leading creationists believe that word is much broader than species so that perhaps only 20,000 different animals (according to one estimate) would have boarded a vessel large enough to have held 50,000. In the case of larger animals such as elephants and giraffes and even dinosaurs, they could have been represented by younger, smaller animals.

The Noah's Ark account is fascinating even to many people who are not particularly religious. We can hope and pray that many people might be led to God's Word as a result of these Noah Ark replicas and parks. Then they might learn how God feels about sin, as shown in the great Flood of Noah, but also learn about His love for us, as shown in His act of sending His only Son, Jesus Christ, down to earth to become our Savior from sin. (John 3:16)

Questions of the Day

Under what circumstances should the name of our planet be capitalized?

“Earth” should be capitalized when it is used as the title of one of the planets of the solar system along with other planets such as Mars and Venus. Otherwise, the word is usually not capitalized, as in phrases such as “down to earth” or “the earth's surface.”



Source: Grammar Logs

What is one's BMI and why is it important?

A person's BMI (Body Mass Index) is found by dividing his weight in pounds by his height in inches squared and then multiplying by 703 ($W \div (H \times H) \times 703$). A BMI of over 30 indicates obesity while a BMI of less than 25 is associated with lower rates of heart disease, high blood pressure, type 2 diabetes, and premature mortality.

Source: *Consumer Reports on Health* (January, 2011)

Creationists Called Fundamentalists

Famous MIT linguist Noam Chomsky maintains the United States is more fundamentalist than the Taliban. In an interview which aired on Iranian TV, he pointed to polls in the U.S. that showed more people seeming to hold to creationist beliefs, at least in some respects, than strict Darwinian dogma. — *Answers (October-December, 2010)*

Young Babies Know Right From Wrong

Already at only six months of age, babies seem to have a sense of right and wrong. After a series of experiments by researchers at Yale U. which involved puppets and “morality plays,” one of the scientists said, “With the help of well-designed experiments, you can see glimmers of moral thought, moral judgment and moral feeling even in the first year of life...Some sense of good and evil seems to be bred in the bones.” — *Creation (October-December, 2010)*

Busy Day for Marriages

October 10, 2010 was a busy day for marriages as many couples seeking a “perfect 10” wanted to get married on 10/10/10. One Las Vegas marriage license bureau had to extend its hours on the 10th from 6 p.m. to midnight to accommodate the rush. October 10 was perhaps the most sought-after wedding date since July 7, 2007, the “lucky” 07/07/07. — *Milwaukee Journal Sentinel (10/11/10)*

One-Third of Cats and Dogs Are Overweight

About one-third of cats and dogs in the United States are overweight or obese, according to the March, 2010 issue of *Veterinary Clinics of North America*. As in humans, excess weight in pets increases the risk of arthritis, heart disease, and premature death.—*Consumers Reports On Health (August, 2010)*

Javan Rhinos in Danger

Efforts to save one of the world’s most endangered species from destruction, the Javan rhino, have intensified. Only about 50 of the species are left in the wild, most of which are living in one national park in Indonesia. An electric fence is being built around a new sanctuary and breeding ground. And conservationist are even talking about relocating some of the 5-ton animals in order to spread out the population to give the animals a better chance to survive. Otherwise drought or a nearby volcano could destroy most of what’s left of the population.—*news.yahoo.com (6/21/10)*

5,000-Year-Old Door Found in Switzerland

A 5,000-year-old door that may be one of the oldest ever found has been unearthed in the Swiss city of Zurich by archaeologists. The poplar wood door is “solid and elegant” with well-preserved hinges and a “remarkable” design for holding the boards together, the chief archaeologist said. Using tree rings to determine its age, the scientists think it may date from the year 3,063 B.C. An older door possibly dating to 3,700 B.C. was found in the area in the 19th century. — *news.yahoo.com/ (10/20/10)*

Some Monkeys See Themselves in Mirrors

For the first time scientists have discovered that some monkeys can recognize themselves in mirrors. Normally primates fail to recognize their reflections, but in the new study rhesus macaques seemed to be able to recognize themselves in mirrors. Macaques usually interpret their reflections as intruders and become either aggressive or submissive. Only a few other animals such as elephants and dolphins seem to possess a form of self-awareness as did the monkeys in the trial—*livescience.com (9/29/10)*



English Woman Speaks With French Accent

A woman in southwestern England began speaking with what sounded like a French accent after she experienced a severe migraine attack. Her condition, called foreign accent syndrome, is known in only a few dozen cases around the world. Previous cases have involved people speaking with newly found accents that sounded German, Spanish, Welsh, Italian or Irish despite their often having little connection with those countries. The new accents probably are a result of a simple shift in the way people move their mouths or emphasize certain syllables after a brain injury. — *Milwaukee Journal Sentinel (9/16/10)*

Plankton Declining

Plant plankton are in serious decline around the world. The tiny organisms are the foundation for the bountiful marine food web and produce half the world's oxygen while sucking up harmful carbon dioxide. Sea birds and marine mammals starve and die in huge numbers when plankton levels are down. According to an article in *Nature*, the likely cause for the decline is global warming which makes it hard for plankton to get vital nutrients. Worldwide phytoplankton levels are down 40% since the 1950s.—*Yahoo News/AP (7/28/10)*

Gorge in Texas Formed Quickly

Geologists investigating Canyon Lake Gorge in Texas have determined the 23-foot deep gorge was formed rapidly by raging floodwaters. The floodwaters moved so rapidly they were able to pick up and move large limestone boulders that helped carve out the canyon in only three days. The researchers stated there are no real ways to tell the difference between canyons that formed rapidly by megafloods and those that formed over “millions of years” by slow erosion.—*Creation (October-December, 2010)*

Oscar, the Bionic Cat

One of the first bionic felines is a farm cat named Oscar. After losing his two rear paws in an accident with a harvester, the black cat was outfitted with metallic pegs that link his ankles to new prosthetic feet similar to how deer antlers grow through skin. Now back on his feet, Oscar has no trouble hopping over hurdles.—*myway.com (6/26/10)*

Find Coolest Star-Like Body Ever Observed

An international team of astronomers says it has found a brown dwarf star just nine light-years from Earth, the closest one ever detected. This star is also the coolest star-like body ever observed with a temperature of just 350 degrees. Brown dwarfs occupy a niche between large planets and small stars with characteristics of both.—*Discover (October, 2010)*

Private Spaceship Makes First Solo Flight

SpaceShipTwo made its first solo glide flight in October. Carried by its mothership to an altitude of 45,000 feet above the Mojave Desert, the rocket was released and flew freely for 11 minutes while manned by two pilots before it landed at an airport runway. Owned by the private Virgin Galactic company, the ship is undergoing testing before it will begin to carry tourists into space. On this flight, the spaceship merely glided and did not fire its engine.—*news.yahoo.com (10/10/10)*

More Fruit and Veggies Means Less Cancer

A large study involving nearly a half-million participants found the baseline for fruit and vegetable consumption was about two to three servings a day. For each additional two daily servings the risk of developing cancer dropped 4%. Fruit and vegetable consumption can also reduce cholesterol and the risk of cardiovascular diseases such as heart disease and stroke—*Mayo Clinic Health Letter (November, 2010)*

Whale Takes a Long Trip

A female humpback whale which was either lost or out for an adventure swam at least 6,200 miles from Brazil to the African island of Madagascar. Researchers believe it was the longest single trip ever undertaken by a mammal. A marine ecologist wasn't sure why the animal made the trip but said it wasn't to mate.—*news.yahoo.com/AP (10/13/10)*



Silkworms Produce Spider Silk

Two universities and a laboratory have combined efforts to produce transgenic silkworms capable of spinning artificial spider silks. Natural spider silks have higher tensile strength and elasticity than naturally spun silkworm fibers. The artificial spider silks were similar in quality to the natural spider silks. A Notre Dame professor said the artificial fibers were a significant breakthrough in the development of superior silk fibers for medical and non-medical applications.—*sciencedaily.com (9/29/10)*

More News Briefs Online

Do curveballs thrown by pitchers really curve?

How old is the world's oldest man?

How much damage to life in the Gulf of Mexico was caused by the oil spill?

Find these and still more News Briefs online at www.lutheranscience.org



NUGGETS

Top 10 Working Animals



Bedbug-Sniffing Dogs

Bomb-Sniffing Bees



Guard llamas

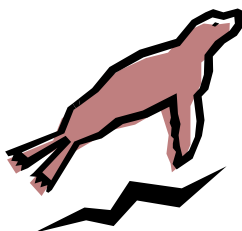
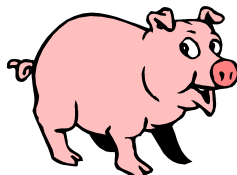


Mine-sweeping dolphins

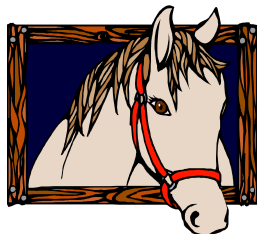
Fishing cormorants



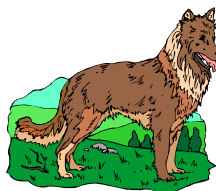
Truffle-hunting pigs



Sea lion scientists (they explore deep in the ocean for scientists)



Therapy horses



Rescue dogs

Disease-sniffing dogs



Source:
www.livescience.com

FOODS WHICH ARE BETTER THAN ADVERTIZED

Iceberg Lettuce--contains *lutein* and *zeaxanthin* which can reduce the risk for cataracts and macular degeneration; when eaten releases *cholecystokinin*, a hormone that can reduce appetite and lead to fewer calories consumed.

Watermelon--contains 40% more *lycopene* (a potent antioxidant that can lower the risk of some cancers) than fresh tomatoes; one slice has about 4% of the daily requirements for fiber.



Sauerkraut--contains *isothiocyanates* which appear to inhibit the proliferation of cancer cells and accelerate the death of these cells.

Onions--are high in vitamin C, fiber, vitamin B-6 and folate and rich in *quercetin*, an flavonoid with powerful anticancer effects, as well as *allyl sulfides*, strong protective compounds.

Artichokes--can promote better digestive health including a reduction in symptoms from irritable bowel syndrome; contains a mix of antioxidants as well as *silymarin* which may improve liver health in patients with hepatitis.

Avocados--are high in fat, but it mostly is the healthful, monounsaturated kind; may increase good HDL cholesterol while reducing total cholesterol.

Source: *Bottom Line Personal* (June 1, 2010)

Sometimes spiritual messages in creationist writings are unfortunately tinged with decision theology or work righteousness overtones. So, it was heart-warming to read the following by Jonathan Sarfati, a creationist with Jewish roots, :

"Scripture shows that there is a God who created us and therefore owns us. He has set a perfect moral standard of which we fall short (Romans 3:23). He is perfectly just, so must punish transgressions. Since our transgressions offend His infinite holiness, the punishment must also be infinite.

Either we must suffer such punishment, or else a Substitute must endure it in our place (Isaiah 53). The Substitute must be fully human to substitute for humanity (Hebrews 2:14), and must be fully Divine to endure God's infinite wrath (Isaiah 53:10). To be the mediator between God and Man, Jesus must be both. 1 Timothy 2: states:

"For there is one God and one mediator between God and men, the man Christ Jesus."

We cannot earn salvation by any deeds we do (Romans 3:24, 4:2, Ephesians 2:8-9). These verses teach that justification, the declaration of legal innocence before God, is a gift. It takes place the moment one has faith in Christ (Romans 5:1).

Source: *Creation* (Jan-Mar, 2011)



MORE NUGGETS

MANAGING YOUR WEIGHT - FOUR TIPS

☒ **Drink Water.** Water fills you up so you eat less, effective especially in middle-aged and older people.

☒ **Be Consistent.** Pounds added during a stretch of time of inactivity or overeating are harder to lose than if they had not been added in the first place.

☒ **Get Good Sleep.** Less than seven to nine hours of sleep a night can keep body fat in place and also increase hunger and appetite-boosting hormones.

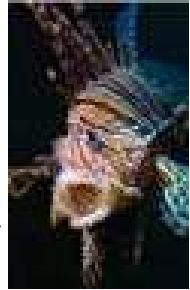
☒ **Log on.** Regular use of weight-management websites has been shown to keep weight down.

Source: USA Weekend
(November 26-28, 2010)



Eat the Invaders

Researchers with the National Oceanic and Atmospheric Administration suggest a new strategy for controlling invasive lionfish—eat them.



The agency adds that the destructive fish are "delicious."

Source: *Discover* (October, 2010)

How great is the love the Father has lavished on us, that we should be called children of God! And that is what we are! The reason the world does not know us is that it did not know him.
1 John 3:1

HOW RELIABLE ARE ECONOMIC STUDIES?

"In 1992 a now-classic study by researchers at Harvard and the National Bureau of Economic Research examined papers from a range of economics journals and determined that approximately *none* of them had conclusively proved anything one way or the other. Given that dismal assessment—and given the great influence of economists on financial institutions and regulation—it's a wonder the global economic infrastructure is not in far worse shape. (Of course, scientific findings that point out the problems with scientific findings are fair game for reanalysis too.)"



Source: *Discover* (July/August, 2010)

Why Does Daylight Saving Time Begin at 2 a.m.?

Before long most U.S. residents will gain an hour of daylight as it's time to spring forward.

Few people will likely wake up exactly at 2:00 a.m. local time to move the clock hand, or dial, forward an hour. But that's when daylight saving time officially begins on the second Sunday in March. It ends on the first Sunday in November, when clocks are turned back at 2:00 a.m. local time to read 1:00 a.m. That is, for everyone except those who live in Hawaii, American Samoa, Guam, Puerto Rico, the Virgin Islands, or most of Arizona, (with the exception of the Navajo Nation).



Why two o'clock? The thinking goes it's late enough that most people would be at home, with few bars and restaurants being affected. In addition, it prevents the date from switching to yesterday; it would be confusing if, say, we changed the clocks at midnight back to 11 p.m. The time is also early enough that the clock-hand change occurs before early shift workers and early churchgoers might be impacted, according to the WebExhibits, an online museum.

Turning clocks back in the fall could mean an extra hour at bars, which tend to close at 2 a.m., right? Not so, according to the California Energy Commission. Bars actually close at 1:59 a.m., so they are already closed when daylight saving time begins.

—*Live Science* (3/14/10)



TELLING LIES FOR FUN



The following are the winning entries in the 2010 annual lying contest held by the Burlington (WI) Liars Club.



◎ "I almost had a psychic girlfriend but she left me before we met."



◎ "My luck is so bad that if I bought a cemetery, people would stop dying."



◎ "My neighbor's scarecrow was so good the crows brought back the corn they stole last year."



Source: *The (Racine) Journal Times* (12/30/10)



Storks

Even the *stork* in the sky knows her appointed seasons, and the dove, the swift and the thrush observe the time of their migration.

But my people do not know the requirements of the LORD. Jeremiah 8:7 (NIV)

The prophet Jeremiah in these words is complaining about God's people, the nation of Judah, who showed how they were failing to learn and obey God's words. How ashamed they should have been if they would only compare their behavior to that of the birds of the air, like storks, who knew when they were supposed to do things and did them.

What are storks? There are about 20 different types

or species of certain long-necked birds which include storks. Other birds in this group are herons and flamingos.



What do storks look like? These birds may be as short as 2 feet to as tall as 5 feet. All or part of their heads are likely to be bare of feathers and are brightly colored.

How do storks act when they are excited? Storks are entirely voiceless or nearly so, but some of them when excited will make loud sounds by clapping their bills together. When they fly away they will take turns flapping and soaring,

with their necks stretched out and legs trailing behind.

Where do storks live?

They live mainly in Africa, Asia, and Europe. However, the black-necked stork lives in Australia, and three species live in America between Florida and Argentina.

Males and females work together to build nests. The nests are large platforms made of twigs. They may be built in trees, on rock ledges, or even on rooftops.



What do storks eat?

They feed during the day catching small animals in shallow water and in fields. Some storks eat carrion (dead animals).

Do storks lay eggs? Like other birds, storks lay eggs. The eggs are the color of white chalk. The parents will take turns sitting on the eggs to keep them warm until they hatch in about five weeks.

Source: Britannica Online

God has given us His Word, the Holy Bible, to teach us about Jesus and for us to learn from it and obey it. When we do this, we are being like the stork and other birds that do what God wants them to do.

Activity: Solve the secret code by writing down the letter that comes *after* the letter given. For **Z** write **A**.

H S H R Z L Z C D -

T O R S N Q X

S G Z S R S N Q J R

A Q H M F A Z A H D R



In the World But Not Of the World

Recently there have been a number of cases where the “world” has not been especially kind to religion, especially creationist views.

Case #1: The “leading candidate” for an astronomy post at the University of Kentucky ended up losing his opportunity when his Intelligent Design views became known. He had expressed some doubts about classic Darwinism although he claimed not to be a creationist. He has now settled with the school after suing for religious discrimination.

Case #2: The Institute for Creation Research has failed to get the Texas state educational authorities to certify its master’s degree in science program although it had not faced that problem in California.

Case #3: Meanwhile, in California, a U.S. circuit court has ruled that state universities there can refuse to accept science credits from any private high school that teaches creation in its science courses.

Case #4: NASA’s Jet Propul-

sion Laboratory demoted a computer specialist who had shared intelligent design DVDs with colleagues. He was accused of being disruptive in the workplace for “promoting religion.”

Such acts of discrimination are not new. Actor/comedian Ben Stein discussed some other cases in his documentary, *Expelled-No Intelligence Allowed*.

There often is intense pressure to give in to the world if it appears we must do so to advance our lives or careers. But Jesus in a prayer to His heavenly Fathers says of His followers, “They are not of the world, even as I am not of it...As you sent me into the world, I have sent them into the world (John 17:16,18).

Not all doors are closing, thank God. A Noah’s Ark theme park tied to Ken Ham’s Creation Museum has been given the green light to begin construction in Kentucky and has even been promised some state aid, much to the consternation of atheists.

We who accept the creation account as true history still have relative freedom in this country to express our views. If worse ever comes to worse, we can still attempt to persuade the world with holy lives. Jesus once said, “Let your light shine before men, that they may see your good deeds and praise your Father in heaven. (Matthew 5:16)” LSI

—Warren Krug, editor

LUTHERAN SCIENCE INSTITUTE / APPLICATION FORM

Please complete form and mail with payment to: Mr. Craig Schwartz,
1710 Ulster St., Denver, CO 80220-2053

MEMBERSHIPS:

1. **Voting membership** (WELS or ELS, 18 years of age or older, must subscribe to the Statement of Belief and Objectives in the Constitution)
2. **Groups** (congregations, schools, organizations)
3. **Associate** (non-WELS/ELS, non-voting)
4. **Foreign** (outside the USA)
5. **Electronic memberships*** (half-price. *Shown below in parenthesis*)
* All publications will be delivered via e-mail in .pdf format.
6. **Student** (currently enrolled in high school or college or under age 18)
7. **Free One-Year Church Membership** for LSI-designated door offerings
8. **Bundled** (at least five copies for one year to a single address)

RATES: Circle membership & length desired and check new or renewal.

	One year	Three years	Ten years	Lifetime
Voting	\$18 (\$9)	\$42 (\$21)	\$120 (\$60)	\$200 (\$100)
Group/ Associate/ Foreign	\$25 (\$12.50)	\$60 (\$30)	\$165 (\$82.50)	\$275 (\$137.50) Not valid for groups
Student	\$5 (\$2.50)	—	—	—

NAME _____

ADDRESS _____

CITY _____ STATE _____ ZIP _____

E-MAIL _____ PHONE (____) _____

Signature _____ DATE _____

INDIVIDUALS, please also fill in the following:

CHURCH _____ CITY _____

DEGREES (if any) _____ FIELD or MAJOR _____

BUNDLED SUBSCRIPTION: _____ copies (5 minimum) x \$6 (for one year) = \$ _____

LUTHERAN SCIENCE INSTITUTE

4130 Harvest Lane
Racine, Wisconsin 53402